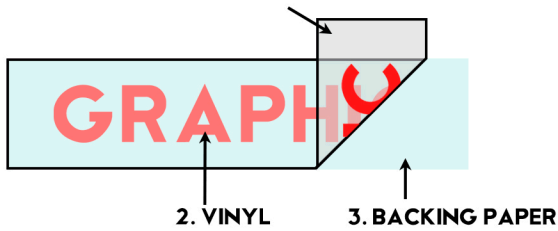


HOW TO APPLY YOUR VINYL GRAPHICS

The most critical part of installing your graphics has nothing to do with "Installation". It is all in the cleaning and preparation. Before proceeding please read the HOW TO CLEAN YOUR SURFACE and Troubleshooting Tips Sheet.

I. SEMI-TRANSPARENT TRANSFER TAPE



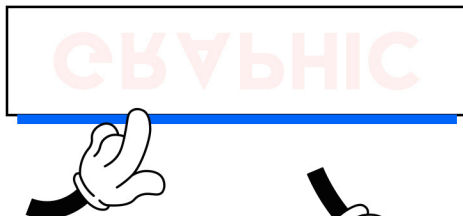
Your vinyl arrives as a pre-spaced sheet of letters made up of three layers.

1. The top layer (or transfer tape)
2. The middle layer (the actual letters/ decal)
3. The bottom layer (paper backing)

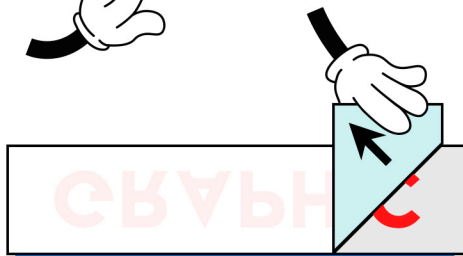
Position your vinyl sheet on the desired surface, make sure you have the graphic centered and measured level and secure it with masking or painters tape. You can see the lettering through its semi-transparent top layer.



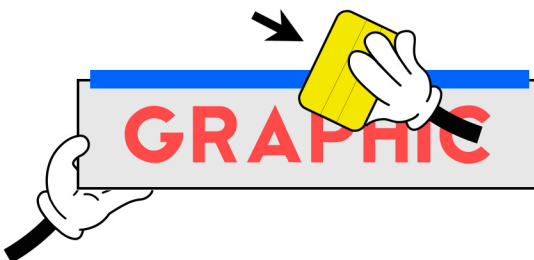
Create a hinge by running a strip of tape along the top edge, half on the graphic and half off. This will allow you to fold the graphics upward. Remove any unnecessary pieces of tape except for the "Hinge"



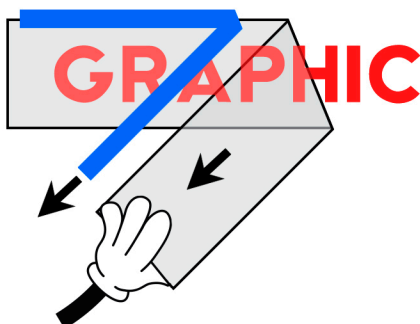
Flip the lettering sheet upward and gently run your finger along the top edge or hinge side to make sure everything is stuck together well and make a crisp fold.



Starting in one corner, slowly peel off the backing sheet (bottom layer). The lettering should stay stuck to the semi-transparent transfer tape. It is always best to fold the backing paper back onto itself. (if the lettering wants to stick to the backing sheet, slowly manipulate the backing to help the letters stick to the top layer.)



With the backing paper removed, carefully fold the graphic back down close to the surface, do not allow the lettering to come into contact with the surface. Start in the center of the "hinge" and make over lapping strokes with the supplied squeegee or a credit card.



Now all that is left is to remove the transfer tape. Start on one corner, fold the tape back onto itself and gently pull the tape off the surface. Pulling directly up from the surface may result in the lettering lifting. It is always best to pull the transfer tape at a 180 degree angle.